

SEND THE INQUIRY

+48 58 55 40 410

Standards:

DIN 315~
GOST 3032-76
PN-M 82439



Coating (standard):



YELLOW
ZINC
COATING

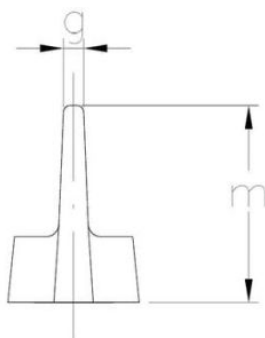
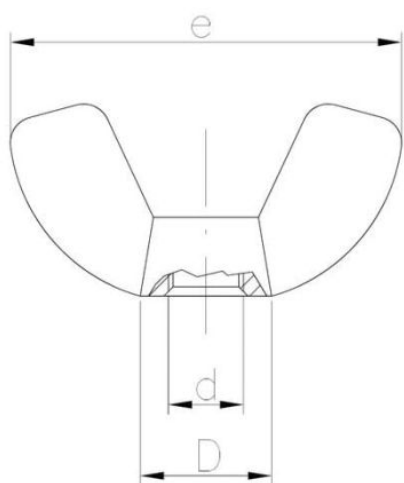


WHITE
ZINC
COATING

Coating (special order):



BLACK
ZINC
COATING



Dimensions

Material index	d	D [mm]	e [mm]	m [mm]	g [mm]	Type of coating
1510040BD315T	M4	10.0	21.0	11.5	3.0	B (White zinc coating)